

## Adjustable Deadbox



### Where can a “DBAR” most likely be installed?

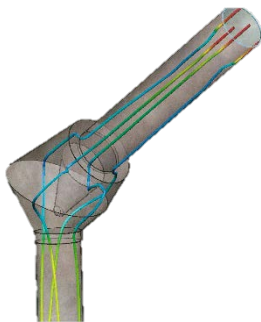
DBAR’s can be used in a wide variety of applications from cushion boxes for long spout runs, to a flow retarder. This cushion box can be used more specifically on grain legs that are not running at full capacity. The DBAR is designed such that there is a consistent pock of grain at all times without sacrificing loss of capacity.

### What is a “DBAR”?

DBAR stand for Dead Box Adjustable Round. The main function of the dead box is to reduce the amount of damaged grain in a grain system. Reducing the amount of grain damage is accomplished by the use of an adjustable baffle on the interior cone. This allows for the complete control of the cushion for the grain and the degree of self-cleaning that can be achieved.

“UNLIKE THE DBAR CUSHION BOX, A STANDARD CUSHION BOX DOES NOT PROVIDE AN ADEQUATE POCKET OF MATERIAL TO CUSHION INCOMING GRAIN, WHICH LEADS TO GRAIN DAMAGE”

--As Featured In Grain Journal September 2015



Partial Flow Application



Full Flow Application

**For example:** Grain is flowing out of a dryer at 500BPH and feeding into a 3500BPH bucket elevator and then down a spout to a cushion box on top of a grain bin. The DBAR would allow the proper cushion needed for the incoming grain such that grain damage is reduced.



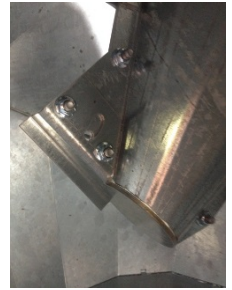
## Flexibility & Customization

Adjustable baffle for many degrees of self-cleaning & cushioning. Adjust the baffle for your specific material type!

Sizes available from 8" up to 20" in stock. Oversized service doors for easy maintenance, part replacement, and upgrades! Some of the cone upgrades include urethane and AR steel.

## Installation & Design

Easy installation for many applications! LCDM's patented design always ensures a cushion of grain inside the cone to minimize the amount of damaged grain.



## Please Contact Us for More Information

### LCDM Corporation

#### *Headquarters*

871 Range End Rd. Dillsburg, PA 17019

#### *Distribution Warehouse*

1611 North Binkley Rd. Larwill, IN 46764

(888) 963-9145

[contact@lcdmcorp.com](mailto:contact@lcdmcorp.com)

**LCDM**  
Corporation

# Benefits & Features